

INSTALLATION INSTRUCTIONS QUICK-STEP LIVYN FOR WALLS

IMPORTANT GUIDELINES UPFRONT

- This installation has a high level of difficulty and requires some experience.
- The installation **MUST** be carried out by a professional installer.
- Choose a product from our Quick-Step Livyn Glue+® collection.
- In order to obtain a good result, we advise you to follow all instructions (installation instructions Quick-Step Livyn Glue + and Mapei products) carefully.
- Please do not use our Livyn glue because it is not suited for wall application or wet areas.
- Please make sure that you keep sufficient distance of min. 30 cm from the fireplace/cooking hobs in the kitchen/etc. and the maximum contact LVT-temperature must stay below 65°C.

1. PREPARATION

START FROM A FLAT AND DRY BASE

- Make sure all surfaces are clean, smooth, and permanently dry for best results; all potential sources of humidity must be neutralised. In general, the substrate should be smooth, flat, stable, dry and permanently dry, free of cracks, free of fungi and bacteria. Take time to repair, patch, and level any damaged or uneven areas.
- Double-check to make sure the surface is structurally sound and the area free of wax, soap scum, and grease. In general the surfaces to be covered with Quick-Step Livyn must be free of any trace of products that could have a negative influence on the adhesion of the installed Quick-Step Livyn and/or Quick-Step Livyn coverings. Therefore, always check the subsurface thoroughly and, if necessary, carry out the necessary interventions to make it compatible with the planned work.
- Remove any moldings, trim, or appliances that may interfere with wall application. Identifying these potential complications in advance will help your installation run smoothly.
- So start from a **perfectly flat and dry base**.
- Always store and transport Quick-Step Livyn carefully to prevent distortions. Store and transport the boxes on a flat surface in neat stacks. Never store the boxes upright or in moist, dusty rooms or places with extreme temperatures.
- Quick-Step Livyn must be acclimatised in the room of installation between 18-30°C for a period of at least 48 hours before installation. The temperature needs to be maintained prior to, during and for at least 24 hours after the installation is completed.
- The type of subwall, its quality and its preparation have a big influence on the final installation result. If the subwall is not appropriate for the installation of Quick-Step Livyn then necessary actions should be taken. Contact Quick-Step Livyn dealer, who will be more than happy to help you. Be aware that unevenness's in the subwall may leave marks in Quick-Step Livyn.
- Make sure the subwall is completely flat. Any unevenness of more than 0.2 mm over a length of 20 cm must be levelled out. The same applies to any unevenness of more than 3 mm over a length of 2 m. Use an appropriate levelling compound and check if a primer or sealer is needed.

IN CASE OF WET WALL APPLICATIONS:

The recommendations above also apply to wet wall installations, but moreover you must make sure a correct, fully waterproof membrane is in place.

As with ceramic tiles, shower enclosures and floors must be protected from penetrating moisture with a moisture-resistant agent. With a view to subsequent gluing of Quick-Step Livyn, different systems can be used to obtain the correct water and vapor barrier:

- Liquid membrane = Full-surface application of a liquid elastic membrane (for example *Mapei Mapegum WPS* or *Mapelastic Aquadefense* min. 1 mm-layer)
- Water vapor barrier - shower prefab elements (for example *Lux Elements*)
- Full-surface and without interruption of the waterproofing membrane (for example *Mapeguard WP 200*)

Check local regulations concerning waterproofing membranes!

An existing ceramic tiles in a bathroom or on a shower wall, should in principle have been equipped with a waterproofing system. You can level these tiles (e.g. with *Mapei Planiprep 4 LVT*) and sand them to provide the Quick-Step Livyn coverings with a perfectly level and dry base.

1

First clean/degrease your walls/tiles with *Caustic soda in boiling water* or suitable detergent.

- + Rinse thoroughly with a lot of water and use different buckets + let it dry.
- + If needed, repeat this operation until all traces of greasy products have been removed.
- + The rinsing is very important, as long as there is some 'foam' on the surface of the rinsing water, there are still traces of cleaning products on the tiles.
- + It's equally important to leave enough drying time (12 hours). The grouting of the tiles will contain a lot of water that needs to be evaporated before starting working. It must be dry!

ATTENTION !

Caustic soda is to be considered an aggressive substance; contact with skin, eyes etc. must be avoided. In case of contact, rinse immediately with abundant clear water. Please make sure you are wearing the right kind of protection (mask, gloves,).

2

Then smoothen the grouting of your old tiles on the wall (to make a smooth wall) with *Planiprep 4 lvt*.

- + Min 2 hours drying time
- + Sand very lightly and manually with a fine grain.

3

Finally remove all dust with a slightly damp cloth.



2. INSTALLATION

LAYOUT:

Start from the center, use a level and prepare the installation thoroughly.

Start by finding the **center of the wall** and use a level to create intersecting vertical and horizontal lines. Adjust the lines depending on how both ends of the wall will look like once you have Quick-Step Livyn installed. If you install Quick-Step Livyn with grouting, remember to add grouting lines width when you are creating the layout.

Make sure you make the correct calculation. Make a good looking layout and try to minimise material usage.

CUTTING THE QUICK-STEP LIVYN TILES

Cut the tiles in advance to have the best result.

- + During the wall installation process, you will need to cut some Quick-Step Livyn panels so they can fit properly. Once you have all neighbouring panels, mark how much you need to cut. You can cut straight or curved lines with a concave vinyl knife. Make a very smooth cut and fit the panels in the corners of the walls.
- + To have the best result, **cut the tiles in advance**, (for the floor and for difficult cuts).
- + Undercut makes your cut smoother.
- + Install them next to each other.

For outer corners, you can use the specific profile *Quick-Step Livyn stair profile glue*.

- + First glue with *Mapei - Ultrabond Eco MS for LVT Wall* the profile on the 2 walls
- + Then level with *Mapei - Planiprep 4 LVT*.
- + Then glue the perfectly cut LVT with *Mapei - Ultrabond Eco MS for LVT Wall*.

APPLYING THE ADHESIVE

Cover your floor to protect against spillages.

1

- + Apply the adhesive evenly to the substrate with a suitable notched trowel (denture TKB A2, consumption will be around 300g/m²). Hold the trowel at about 90° degrees (= as straight as possible and no lower than 45°) so the adhesive has an even height. Do not cover layout lines as you might need them later to install your wall tiles.

2

- + Apply as much adhesive as can be covered before a surface skin is formed (20-30 minutes at +23°C/50% R.H.) in order to guarantee a suitable transfer to the backing of the covering. No waiting time is needed with this kind of adhesive.
- + Put on the Quick-Step Livyn covering into the wet adhesive bed: the adhesive ridges have to be impressed. Make sure the Quick-Step Livyn vinyls are free from dust.
- + Install Quick-Step Livyn *LVT glue* down immediately to the wall with or without grouting and start by bonding one/several rows so you can immediately put the Quick-Step Livyn *LVT glue* down in the wet glue. (Starting point: first ± 1 m above floor, then top and finish with the bottom. Use e.g. a laser line so you can perfectly align horizontally). Make sure to avoid air pockets and carefully rub the floor covering down to ensure good adhesive transfer to the backing.

3

- + Some minutes after installing Quick-Step Livyn covering, it is always necessary to carefully roll it down again with a rubber hand roller or to firmly rub it down with a small cork board.
- + Wait for the adhesive to dry fully before grouting the Quick-Step Livyn coverings (min. 24 hours).
- + Remove the cross-spacers (if you have used them).
- + Wet residues or spills must be cleaned directly with *Mapei Cleaner H wipes*. Please make sure that all traces of adhesives are removed, while it is still fresh and wet and that no adhesive 'veil' is left on the surface of the LVT. Do not let adhesive spills harden out as the adhesive can only be removed mechanically once hardened.



The installation can be done with or without spacers. With spacers you can create grouting that can be filled afterwards with *Mapei Flexcolor 4 LVT* or *Kerapoxy 4 LVT*.

Pro's with grouting

- + Ceramic installers are used to it
- + There is more space to correct small mistakes

Pro's without grouting

- + Modern look
- + Not nice with all the decors

If you want to use grouting with Quick-Step Livyn tiles that have already an impression bevel in the design, then you can cut the Quick-Step Livyn tiles following the design.

+ GROUTING (OPTIONAL)

If you want to apply the Quick-Step Livyn tiles with grouting joints (2 to 4 mm), then you need to use *Kerapoxy 4 LVT* or *Flexcolor 4 LVT*, see the technical data sheet for details.

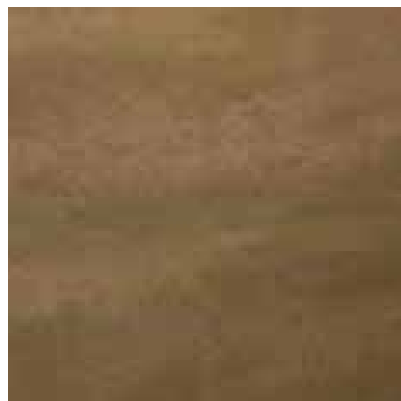
Remains or traces must be removed as soon as possible - before it is hardened – see the Mapei instructions.

FOR WET AREAS (FOR E.G. WALLS IN BATHROOMS)

- + When using *Kerapoxy 4 LVT*, rinse immediately and thoroughly with water (use the white pad first and then a soft sponge)
- + Use several buckets of water (min. one bucket with clean water and a bucket with contaminated water)
- + After 12 hours: if needed, rinse again with *Kerapoxy cleaner* (let it penetrate for 20 minutes) and use the white pad and after that a soft sponge.
- + Leave to dry for 24-48 hours.
- + Spillages of the *Kerapoxy 4 LVT* must be removed immediately (don't let them dry).

FOR DRY AREAS:

- + When using *Flexcolor 4 LVT*, 15-20 minutes after applying the product, depending on the surrounding temperature, and once a thin film has started to form on the surface, remove remains of *Flexcolor 4 LVT* by going over the grouted joints with a damp sponge in a circular motion. Rinse the sponge frequently, using two different containers of water: one to remove the excess mix from the pad, and the other, containing clean water, to rinse the pad. Traces of product still visible after a few hours may be removed with a damp white pad. The final clean-up may be carried out the day after grouting using a dry cloth or *Scotch-Brite®* to wipe off any remaining grout haze from the Quick-Step Livyn tiles. If needed, a liquid cleaner such as *Kerapoxy Cleaner* may be used.
- + Leave to dry for 24-48 hours.
- + Avoid moving the sponge along or across the lines in order not to remove too much grouting from the groove. Use the sidewall of the sponge to smooth-out the grouting.



3. FINISHING

FINISHING THE CRITICAL POINTS (FOR EXAMPLE INNER CORNERS, CONNECTION WITH SHOWER TUBS AND WATER TAPS,...)

Finish the joints with our *Quick-Step® Hydrokit* to make sure critical points are watertight. Also color-matched silicone-based alternatives can be used. Respect all the drying times before enjoying your shower.



4. MAINTENANCE

The shower can be cleaned with our normal *Quick-Step Livyn Cleaner*.



IN SHORT:

- Choose a product from the *Quick-Step Livyn Glue+* Collection.
- For walls: start from a flat and dry surface.
- For showers: start from a flat, dry and vapor proof surface.
- Always read the specific installation instructions of all the products that will be used.

Unilin is not responsible for the nature and quality of the subsurface, as a result of which this advice concerns a principle solution in relation to the technical fact sheet of the product or the products. The contractor must, prior to installation, thoroughly examine the subsoil and assess it according to suitability for the intended purpose. The installation temperatures, storage of materials, temperature of the substrate, etc. must always be strictly observed, even during transport.

With regard to the properties, the preparation and the application of our products, we ask you to strictly follow our technical data sheets and installation instructions. The technical documents of all our products can be consulted on the Quick-step and Mapei website. Or contact your local Quick-Step dealer, he will be happy to help you.

Please check also our Warranty-document on the Quick-Step website or ask your local Quick-Step dealer.